

Magnetic Stripe Reader

SERIES 1260 A

Operation Manual

Version 1.0



This equipment has been tested and found to comply with the limits for Class A digital device. Pursuant to part 15 of the FCC Rules. These limits are designed to provide reasonable protection against harmful interference in a residential installation. This equipment generates, uses, and if not installed and used in accordance with the instructions may cause harmful interference will not occur in a particular installation. If this equipment does cause harmful interference to Radio or television reception, which can be determined by turning the equipment off and on. The user is encouraged to try correct interference by one or more of the following measures:

- Reorient or relocate the receiving antenna.
- Increase the separation between the equipment and receiver.
- Connect the equipment into an outlet on a circuit different from that to which the receiver is connected.
- Consult the dealer or an experienced radio/TV technician for help. This booklet is available from the U.S. government Printing Office, Washington, DC 20402, Stock NO.004-000-00345-4.

<p>Caution: Any changes of modifications not expressly approved by the grantee of this device could void the user authority to operate the equipment.</p>
--

Operation is subject to the following two conditions:

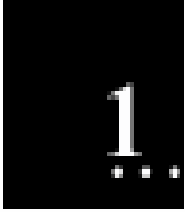
- (1) This device may not cause harmful interference.
- (2) This device must accept any interference received including Interference that may cause undesired operation.

1. Introduction

2. Installation

3. Custom Programming Tool

Appendix I: Specifications



Introduction

1260A is an advanced bi-directional, programmable magnetic stripe reader. Supports **ISO standard format card** .

It is designed for use with credit authorization terminals, point-of-sale terminals, portable terminals, personal computers and banking terminals.

Model 1260AK is designed to be used with IBM/AT compatible computer, entering data. As if it were being generated though the Keyboard, no software modification, nor Programming of input/output devices, nor Addition power supply is needed.

Model 1260AR operates as an on-line card reader which communicates with any computer via an RS232 interface. The 1260AR requires +12v DC from either an external power supply or internal power of your computer or terminal.

What's in packing?

JC-1260AK includes:

- o 1 pcs 1260A Card Reader
- o 1 User's Manual CD
- o 1 keyboard interface communication cable

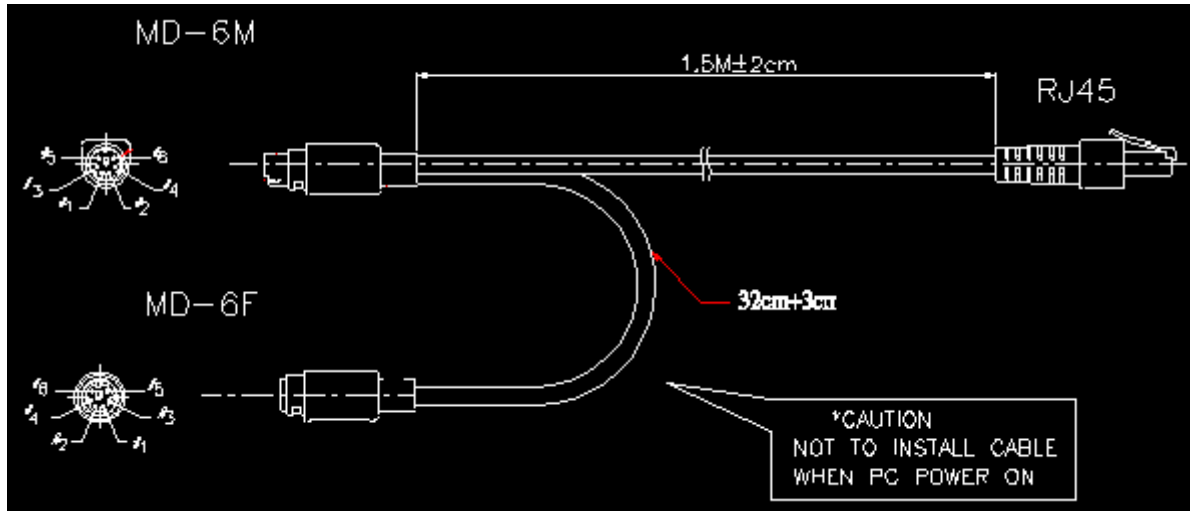
JC-1260AR includes:

- o 1 pcs 1260A Card Reader
- o 1 User's Manual CD
- o 1 RS232 interface communication cable
- o 1 Internal power plate
- o 1 power cable for internal power plate

2

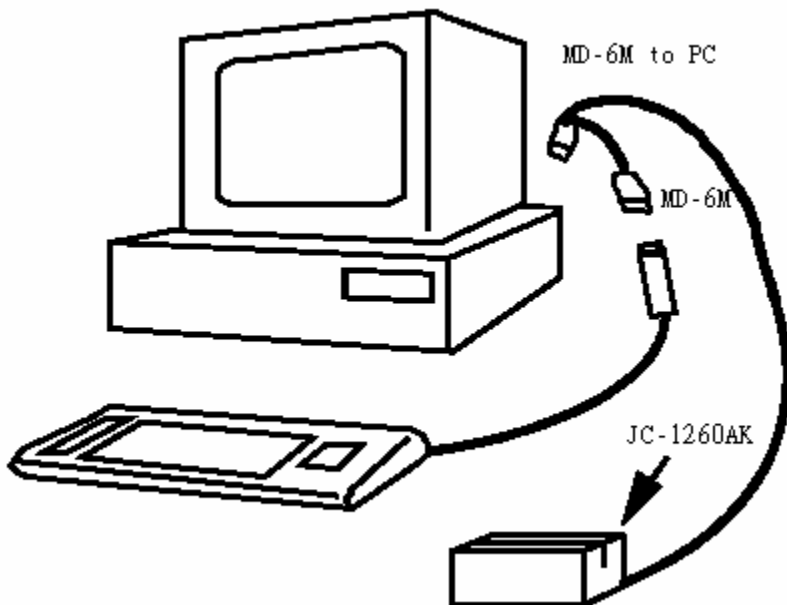
Installation

JC-1260A KB series:

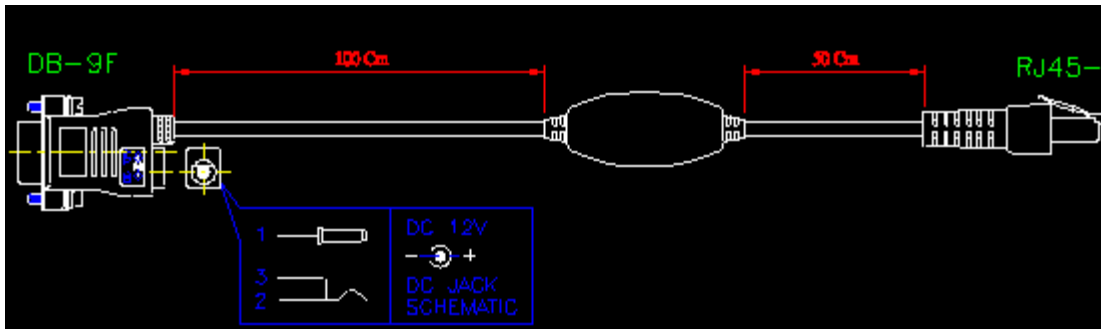


The MD-6M side of KB cable, shall be connected to PC PS/2 Keyboard port,
And then, connect RJ45 side to JC-1260A.

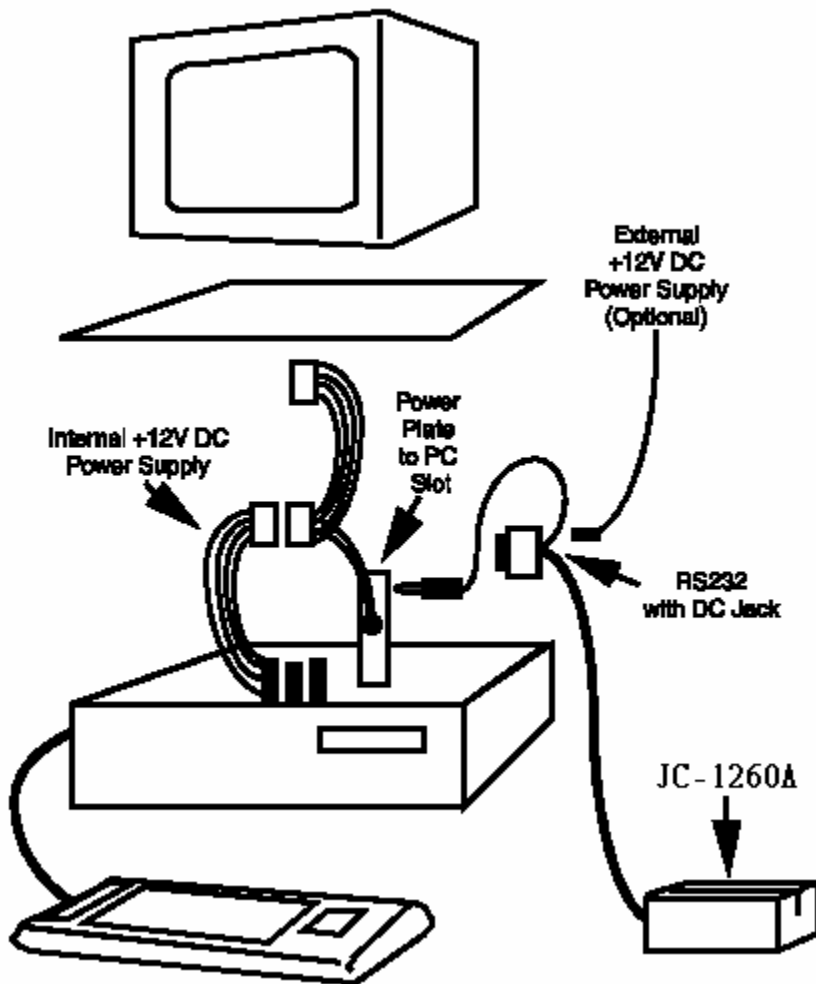
The MD-6F side of KB cable can be connected to normal PC keyboard, PC keyboard can work with JC-1260A together.



JC-1260A RS232 series:



The DB-9F side of RS232 cable connects to PC com port (com1 or com2 or other COMs), RJ45 side connects to JC-1260A. and power connects to DC jack of DB-9F connector.





Custom Programming Tool

The JC-1260A series doesn't need any drivers for PC. For K series (JC-1260AK), it just emulates normal keyboard interface, and sending data just as normal PC keyboard.

You can get the card data by using notepad (Windows system) or in DOS prompt or any words editor.

For R series (JC-1260AR), communicates via RS232 port (COM) to PC.

You can connect 1260AR to a RS232 COM port on PC which is free for use (for example: COM2) and get the card data by some kinds of RS232 communication software. In programming language software, just open the COM ports to reads data. For example in Visual Basic, use MSCOMM32.OCX for design the RS232 communication program and get the card data.

All settings of 1260A can be programmed by the programming tool which include in the CD,

The programming tool supports for Windows OS system like: Windows 95/98/Me/NT/2000/XP ...

Please run the setup.exe first to install to your windows operating system, after the installation, run the 1260A.exe to start the programming.

1. Auto detecting the 1260AK/1260AR

The programming tool will start to auto detect the 1260A/1260R which was connected to PC. You can press the button [CANCEL] to abort the auto detection.

But you need to know what's 1260A interface you are using when the programming tool requests you to set later.

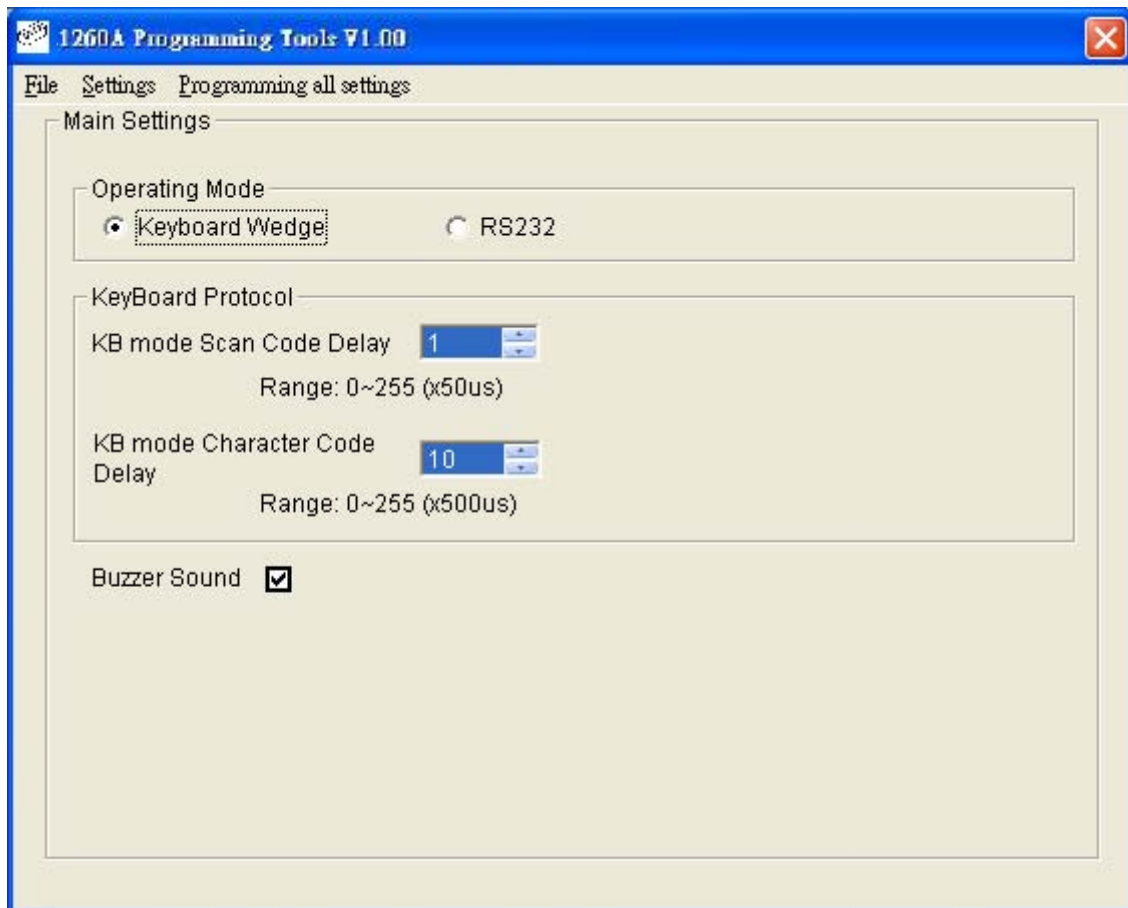


2. Main interface sets

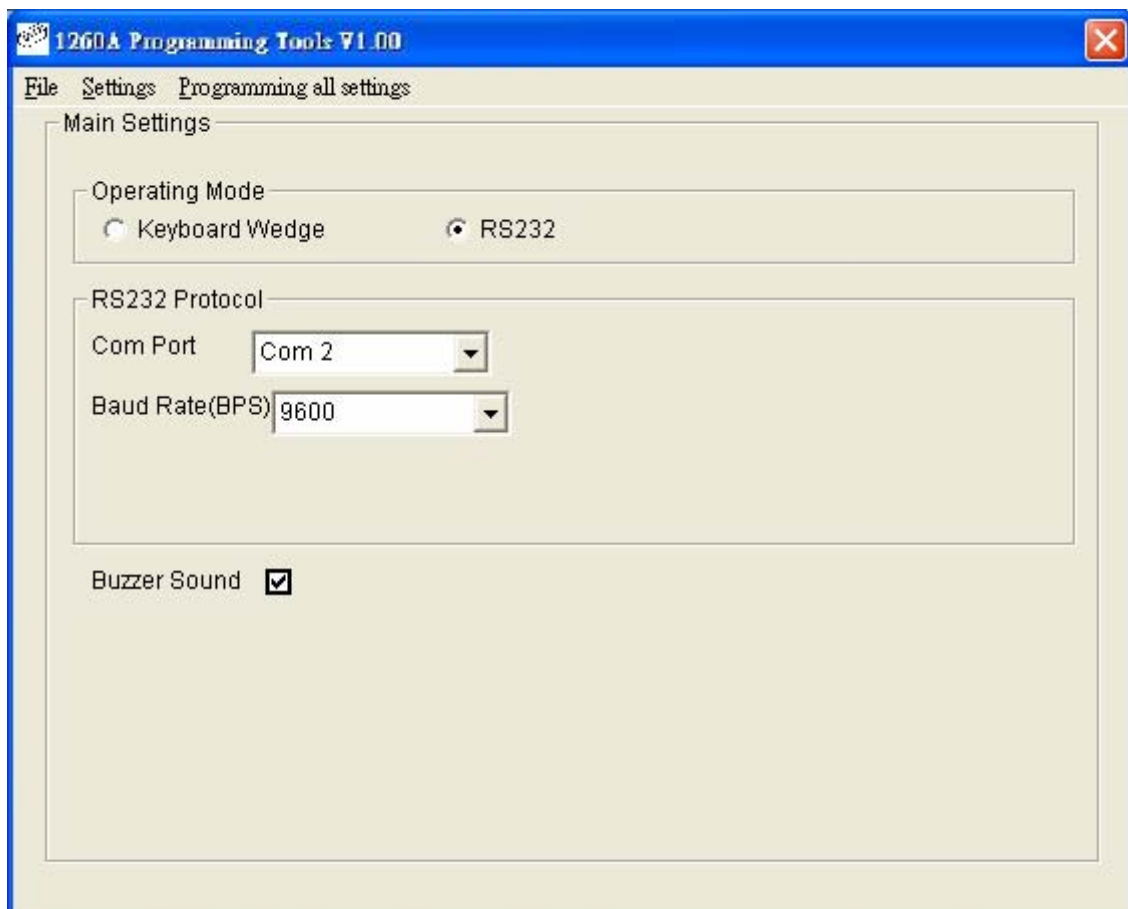
If Auto detection was ok, then main screen shows the operating mode of 1260A that you are using. The image PIC-01 will be shown when 1260AK (keyboard mode) detected.

Or, The main screen will be shown as PIC-02 when 1260AR (RS232 mode) detected.

(The COM port is 2 for example)



PIC-01



PIC-02

Keyboard Mode:

KB mode Scan Code delay

The range is between is 0~255, default is 1.

Set the large value will slow down the speed of KB data sends out, yet it will be more compatible if you are facing the problem with slow PC.

KB mode Character Code delay

The range is between is 0~255, default is 10.

Set the large value will slow down the speed of KB data sends out, yet it will be more compatible if you are facing the problem with slow PC.

RS232 mode:

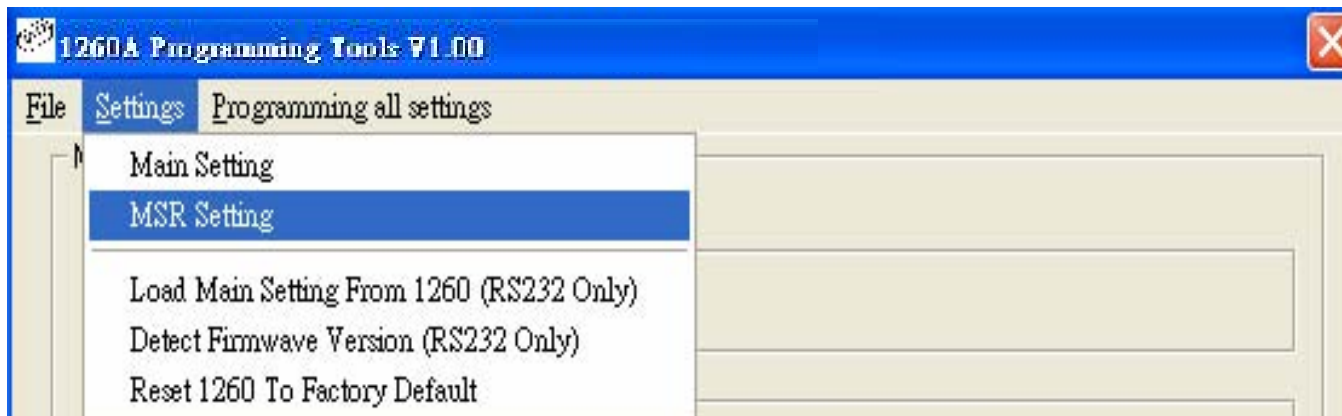
Com port value is for JC-1260AR exists.

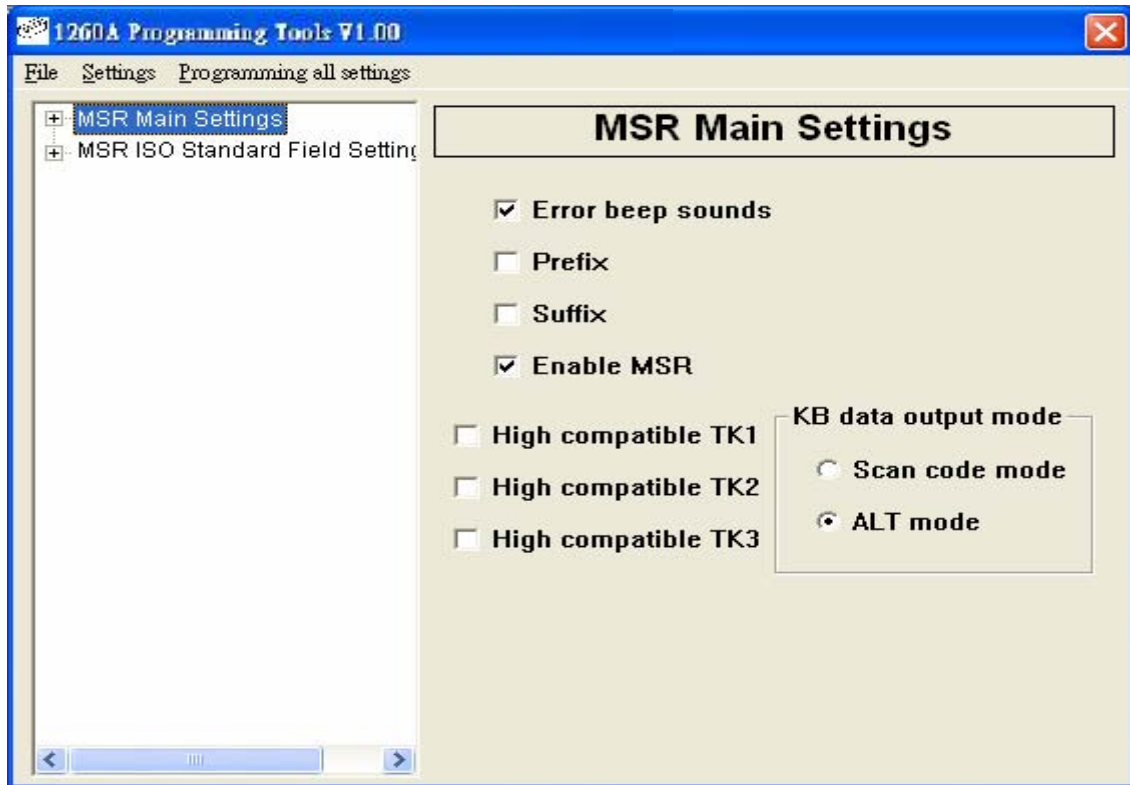
Baud rate is for setting JC-1260AR RS232 communicates speed.

Buzzer Sound:

For enable / disable sounds of 1260A, please click the check box for setting.

3. MSR Setting





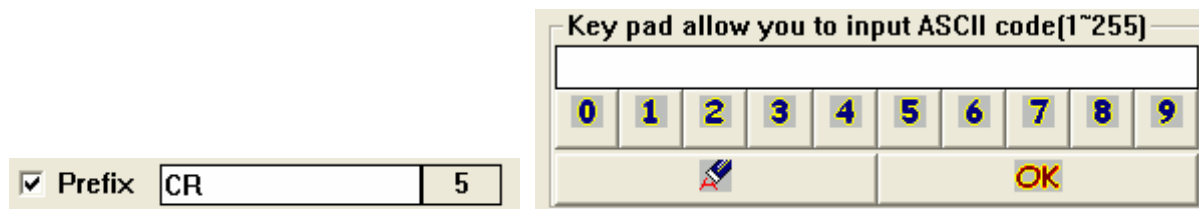
Error Beep Sound

For enable / disable sound when 1260A reads card and error happened.

Prefix / Suffix

Enable or disable prefix / suffix for card data

When on the check box, you can edit the prefix / suffix, key in up to 7 characters.



You can key in data in text field directly, or use mouse click the number to enter the ASCII code.

Note:

The format of output data is:

[Prefix] [Track1 data] [Track2 data] [Track3 data] [Suffix]

[Track x data] = [Track x prefix] [Start sentinel] [card data] [End sentinel] [LRC sentinel] [Track x suffix]

[card data] = [ISO data field 1] [ISO data field 2] [ISO field 3] [CR] [LF]

Refer to MSR track 1/2/3 settings, and ISO format settings for the details.

High compatible TK1,TK2,TK3

For enable / disable high compatible mode for reading data from Track1/2/3

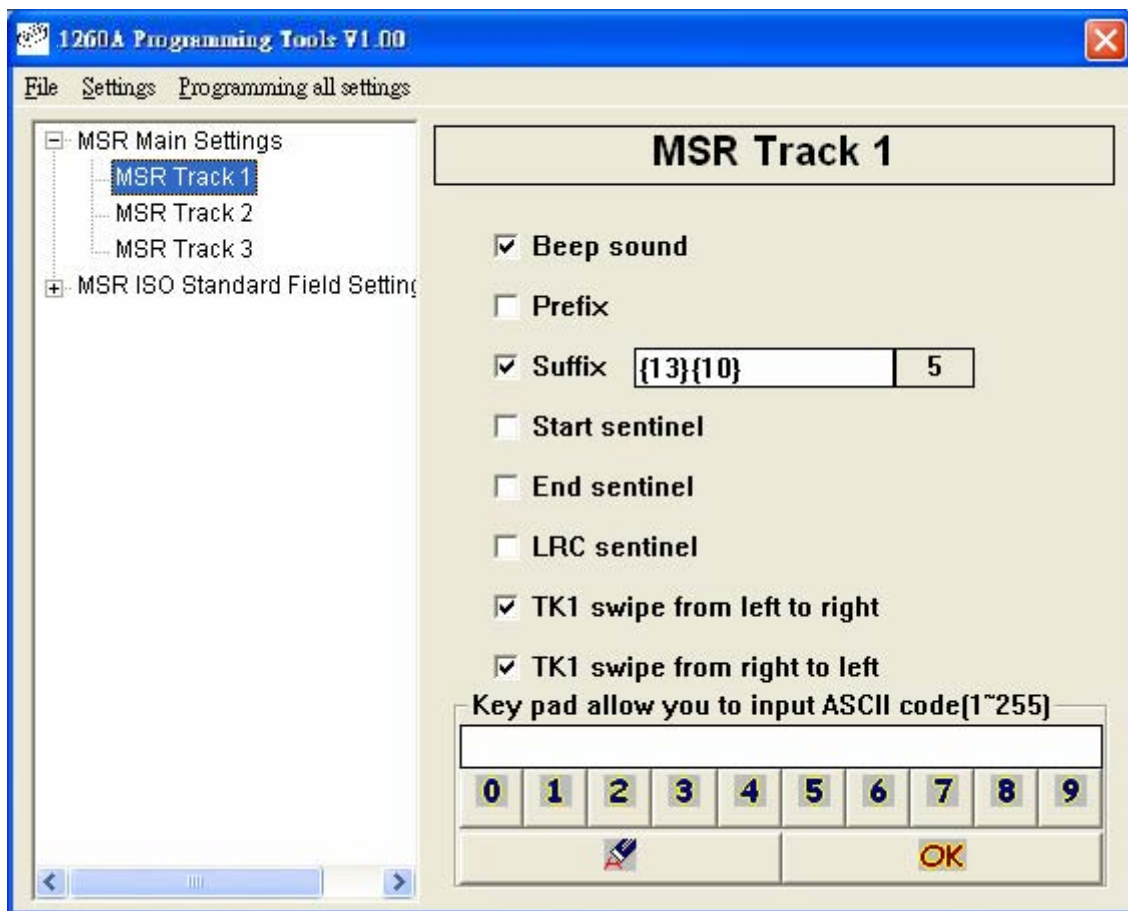
, to enable the option, the decoder will turn off some digit check for reading card data, It will be more efficient to read bad cards which used for long time and damaged a little bit.

KB data output mode

Set to scan code mode, and then card data will be sent to PC by scan code, it emulates the normal keyboard code. Set to ALT mode, card data will be sent by ASCII code mode.

4. MSR Track1 / Track 2 / Track 3 individual Setting

Double click the "MSR main settings", will show up another track1/track2/track3 settings, Please choose one of them to set settings.



Error Beep Sound

For enable / disable sound when 1260A reads card and error happen.

Prefix / Suffix

Enable or disable prefix / suffix for card data

Start Sentinel

Enable / Disable track start sentinel

(Track 1 start sentinel is “% “, Track 2 / 3 start sentinel is “; “)

End sentinel

Enable / Disable track end sentinel

(The end sentinel is “? “ for all tracks)

LRC sentinel

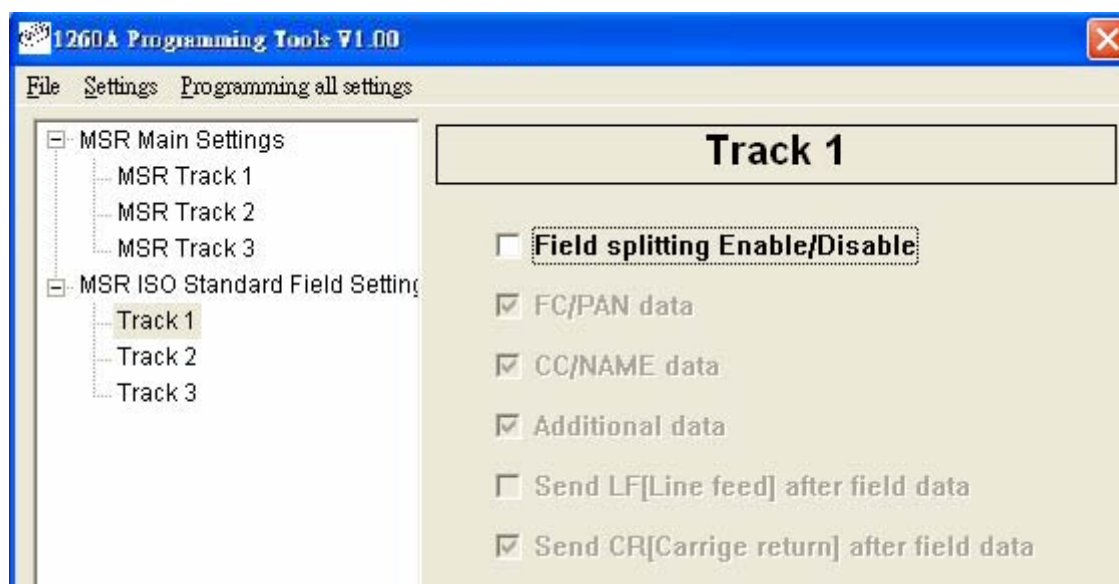
Enable / Disable track LRC sentinel

(LRC = first byte data XOR second byte data XOR third byte data XOR last byte data)

TKx swipe from left to right and swipe from right to left

You can make choice to decide the user to swipe card and read data only from left to right or from right to left or both ways.

5. MSR ISO Standard Field Setting

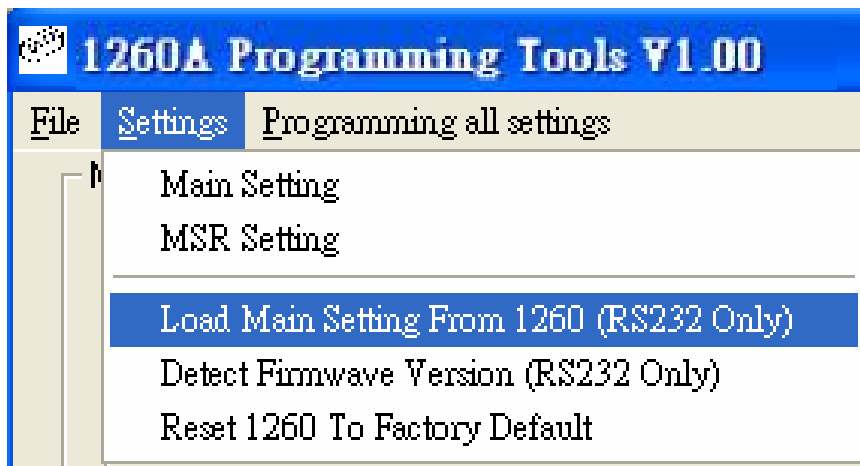


The track data can be split by the “Field splitting Enable/Disable”.

If the card you are using was recoded by ISO standard field format, you can decide what fields you want to display. The default is set to display all fields.

Every field can be split by LF (line feed) or CR (carriage return), Please make choice on [Send LF (Line feed) after field data] or [Send CR (Carriage return) after field data].

6. Load Main Setting From 1260



Choose for up loading settings from JC-1260 to PC, this function only can be active by RS232 cable.

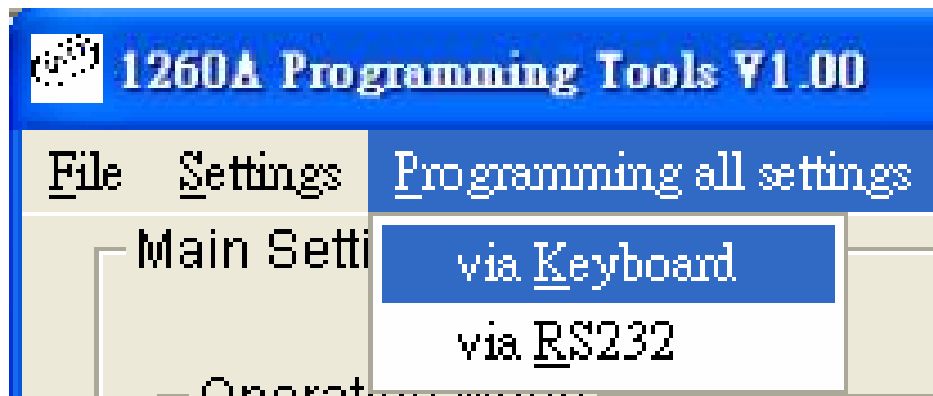
7. Detect Firmware Version

Choose for detect firmware version of current JC-1260, this function only can be active by RS232 cable.

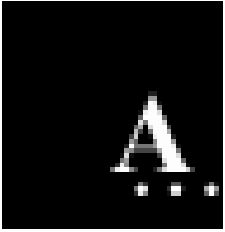
8. Reset 1260 to Factory Default

Choose for reset JC-1260 to factory default settings, this function can be active either with KB or RS232 cable.

9. Programming all settings



Choose for writing all settings you defined to JC-1260, please select via keyboard or via RS232 which depends on what cable you are using.



Appendix I

Specifications

Decoding Capability

- Single-track: Track 1 or Track 2 or Track 3
- Dual-tracks: Tracks 1 & 2 or Tracks 2 & 3
- Triple-tracks: Tracks 1 & 2 & 3

Card Reading Speed

- 7.5 to 125 cm/sec
- Bi-directional

Magnetic Head Life

- 300,000 passes

Status Indicator

- Audible beep for each
- Successful reading

Programming Capabilities

- Track selection
- Prefix (7 characters max.)
Suffix (7 characters max.)
- Field selection
- Start and end sentinel
- LRC selection
- Inter-character delay
- Inter-scan code delay
- RS232 parameters (baud rate,)

System Compatibilities

- JC-1260A standard RS232C and Keyboard interface operates with IBM AT, PS/2 and Compatibles.

Physical

- Dimensions: 115mm x 46mm x 34mm
- Weight: 100g

Environmental

- Operating temperature: 0 ~ 40°C
- Storage temperature: -20 ~ 60°C
- Humidity: 10% ~ 90% RH (non-condensing)

Power Requirement

- Model JC-1260AK: from KB port.
- Model JC-1260AR: from external power supply.

Power Consumption

- During operation: max 300 mA
- While idle: 60 mA